

Warranty Information

Monat Technologies, LLC will refund your Catlock purchase price* if your properly installed Catlock fails to prevent your automobile's catalytic converter from theft.

Necessary for refund:

- Original receipt with order number and vehicle profile
- Copy of police report
 - Vehicles on receipt and police report must match

To obtain warranty service:

By Email: Email an electronic copy your original receipt and police report to info@cat-lock.com.

By Fax: Fax a copy your original receipt and police report to 888-406-1253.

Liability Information

The Catlock is intended for use on street-driven automobile catalytic converters only and any other use shall be considered misuse for warranty and liability purposes.

The purchaser assumes the risk of installing an aftermarket component to their automobile and Monat Technologies, LLC shall not be held liable for damages of any kind incurred to the purchaser, the purchaser's automobile or any consequential damages arising from the purchase, installation, use or misuse of The Catlock.

*Monat Technologies is not responsible and will not reimburse for any liabilities, monetary or otherwise, arising from the theft of a Catlock-protected catalytic converter other than the purchase price of The Catlock™.



THE CATLOCK™

CATALYTIC CONVERTER ANTI-THEFT DEVICE

Installation Guide

Engineered for maximum protection against catalytic converter theft

cat-lock.com



PATENT PENDING



MONAT TECHNOLOGIES™

©2010 Monat Technologies, LLC

cat-lock.com

Instructions

Important: The Catlock™ permanently affixes to your vehicle's catalytic converter. Read all instructions before installing The Catlock™

1) Remove The Catlock™ from packaging

Check part list

For missing parts contact: info@cat-lock.com

Tools needed: adjustable wrench and 3mm Allen wrench

2) Locate your vehicle's catalytic converter(s)

Catalytic converters are found along the exhaust pipe between the engine and muffler

One Catlock per catalytic converter on your vehicle

3) Establish Catlock width

Form a U-shape beneath the catalytic converter with a Long and Short plate (*Short Plate nearest to the catalytic converter—see drawing on right*)

Find a setting that allows for long screws in square holes to pass on either side of catalytic converter

If unsure of appropriate setting, err on the longer setting



4) Affix Catlock width

Fasten Plates together by inserting Short Screws through selected round holes on Long and Short Plates

Apply small drop of thread locker* to Small Screw threads

Place Small Washers and fasten Small Breakaway Nuts on Short Screws

Tighten Small Breakaway Nuts with wrench until tops break off (*Your Catlock is not secure unless the nuts break off*)

Repeat with remaining Long and Short Plates

Ensure width setting is identical

5) Fasten Catlock to catalytic converter

Lay affixed plates across top of catalytic converter (*Orientation of catalytic converters differ by make and model, adjust accordingly*)

Insert Large Screws into square holes on upper plates

Apply small drop of thread locker to Large Screw threads

Connect plates by inserting Large Screws into square holes on lower plates

Place Large Washers and Large Breakaway Nuts on Large Screws

Tighten Large Breakaway Nuts with wrench until tops break off (*Your Catlock is not secure unless the nuts break off*)

Insert Eyebolt into square hole on upper plate

Wrap cable around a permanent part of vehicle's frame and weave it toward other side of Catlock

Insert remaining Eyebolt into square hole on upper plate

Apply small drop of thread locker on Eyebolt threads

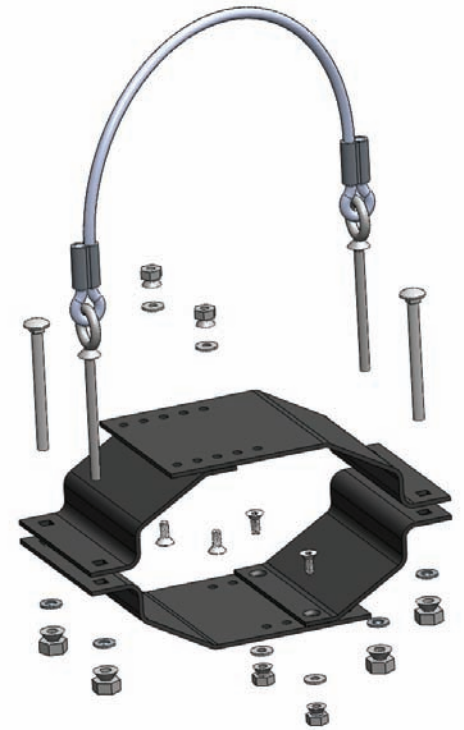
Place Large Washers and Large Breakaway Nuts on Eyebolts

Tighten Large Breakaway Nuts with wrench until tops break off (*Your Catlock is not secure unless the nuts break off*)

*Thread locker dries in about 20 minutes.

Thread locker washes off skin with soap and water.

Do not place thread locker in eyes or mouth, rinse thoroughly if contact occurs.



For installation or removal assistance contact: info@cat-lock.com

Part List

Plates: 2 Long, 2 Short

Screws: 2 Long, 4 Short

Breakaway Nuts: 4 Large, 4 Small

Washers: 4 Large, 4 Small

1 Small tube of thread locker (Not shown)

1 Aircraft-quality Steel Cable with 2 Eyebolts

Important safeguards

Warning: Automobile catalytic converters get extremely hot, wait at least 4 hours after operating an automobile before installing a Catlock.

Do not touch installed Catlock within 4 hours of operating the automobile.

The Catlock is not a toy and is not meant to be handled by children.

Do not place any Catlock parts in eye or mouth.

Protect your eyes when installing or removing The Catlock™